

Lake City Floodplain Park

A new green space in Lake City designed with and for the community

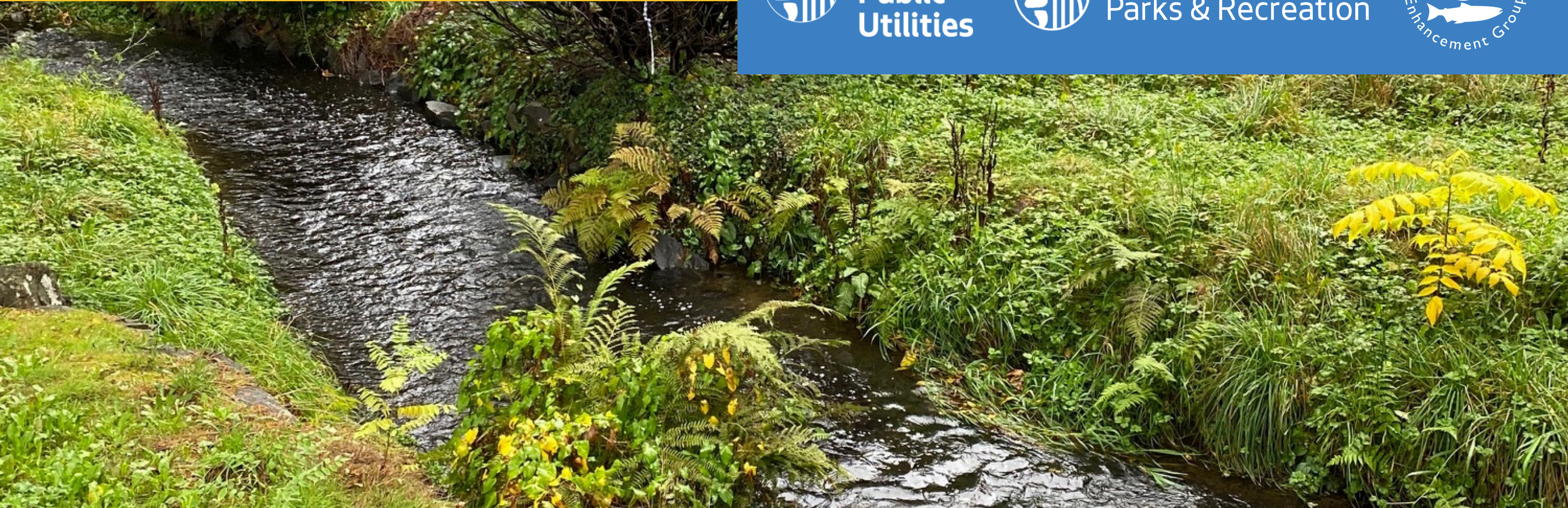
Seattle Design Commission



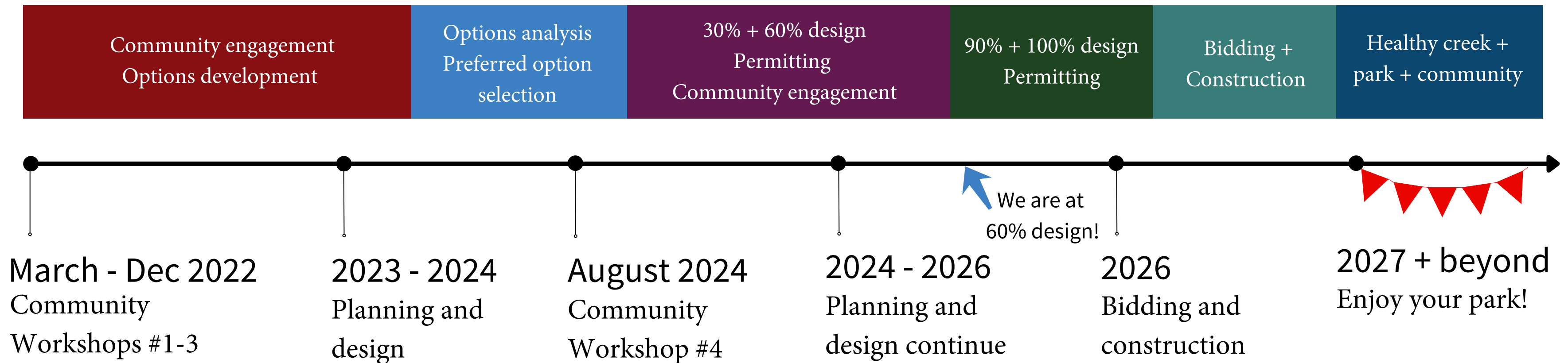
Seattle
Public
Utilities



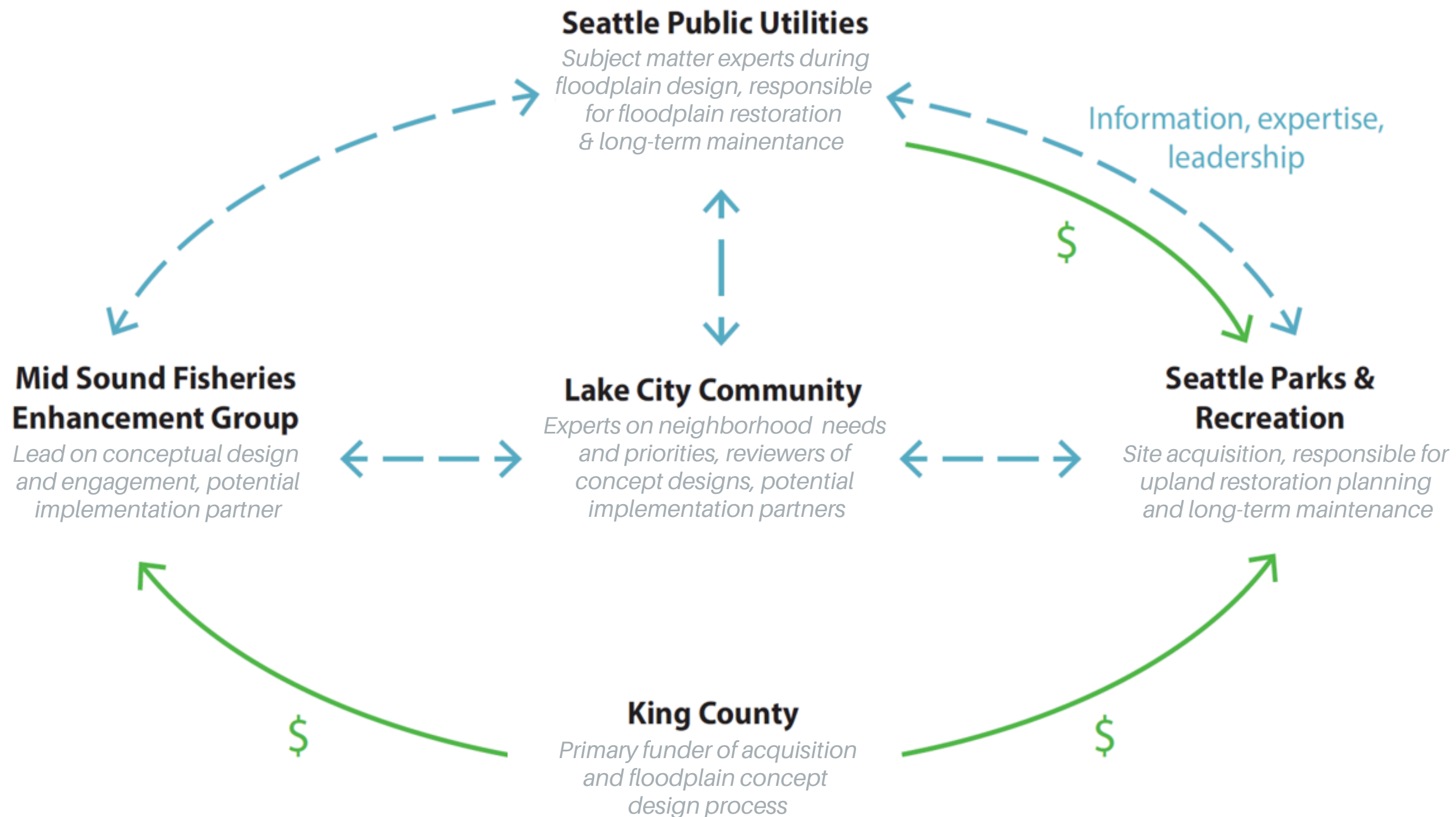
Seattle
Parks & Recreation



Introductions Project Team

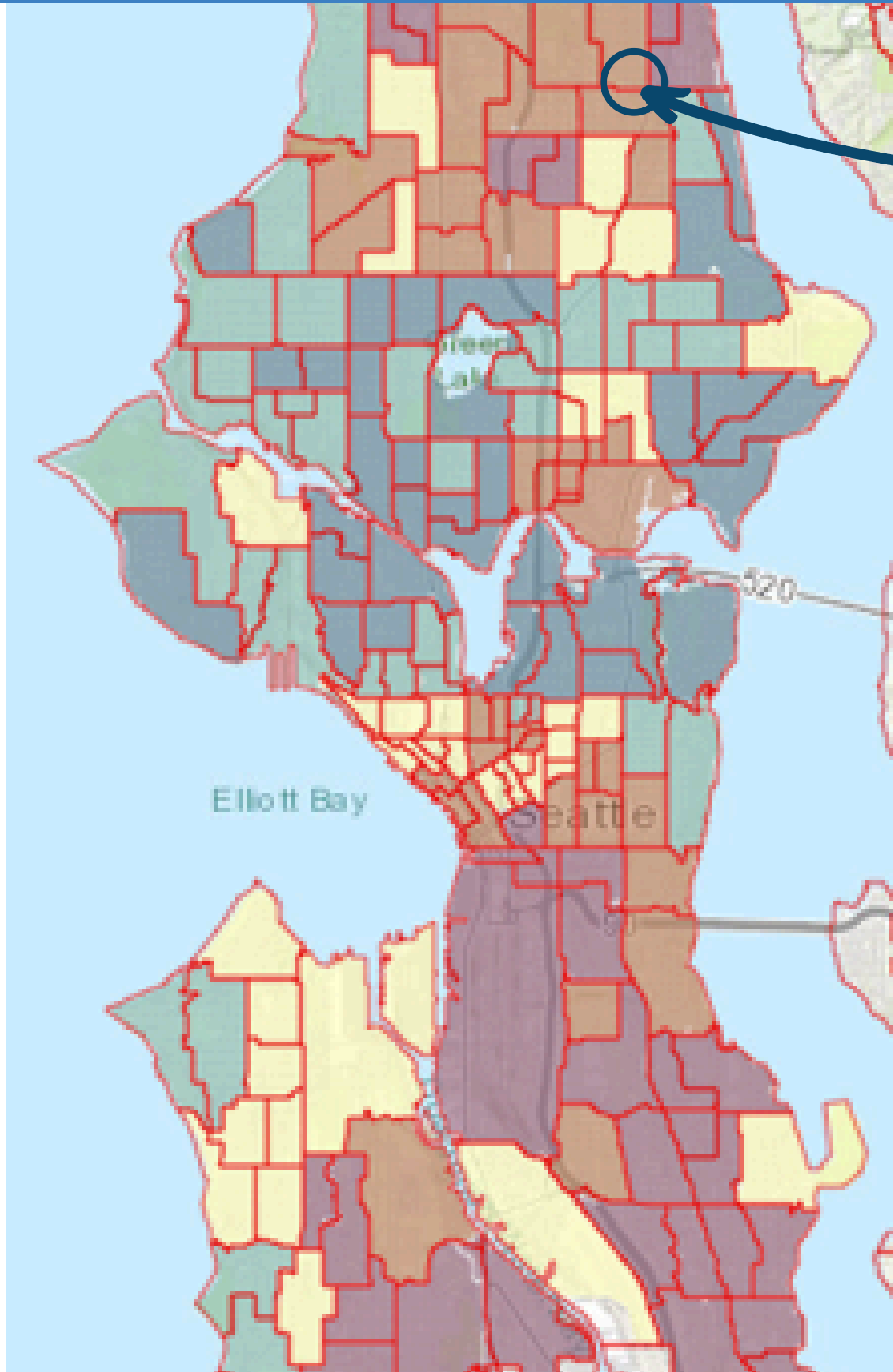


Partnership Model



Neighborhood Demographics

Racial and Social Equity Composite Index



Lake City

Highest Disadvantage + Second Highest Disadvantage Composite Index Scores

Race, English Language Learners, and Origins Index

ranks census tracts by an index of three measures weighted as follows:

- Persons of color (weight: 1.0)
- English language learner (weight: 0.5)
- Foreign born (weight: 0.5)

Socioeconomic Disadvantage Index

ranks census tracts by an index of two equally weighted measures:

- Income below 200% of poverty level
- Educational attainment less than a bachelor's degree

Health Disadvantage Index

ranks census tracts by an index of seven equally weighted measures:

- No leisure-time physical activity
- Diagnosed diabetes
- Obesity
- Mental health not good
- Asthma
- Low life expectancy at birth
- Disability

Site Orientation

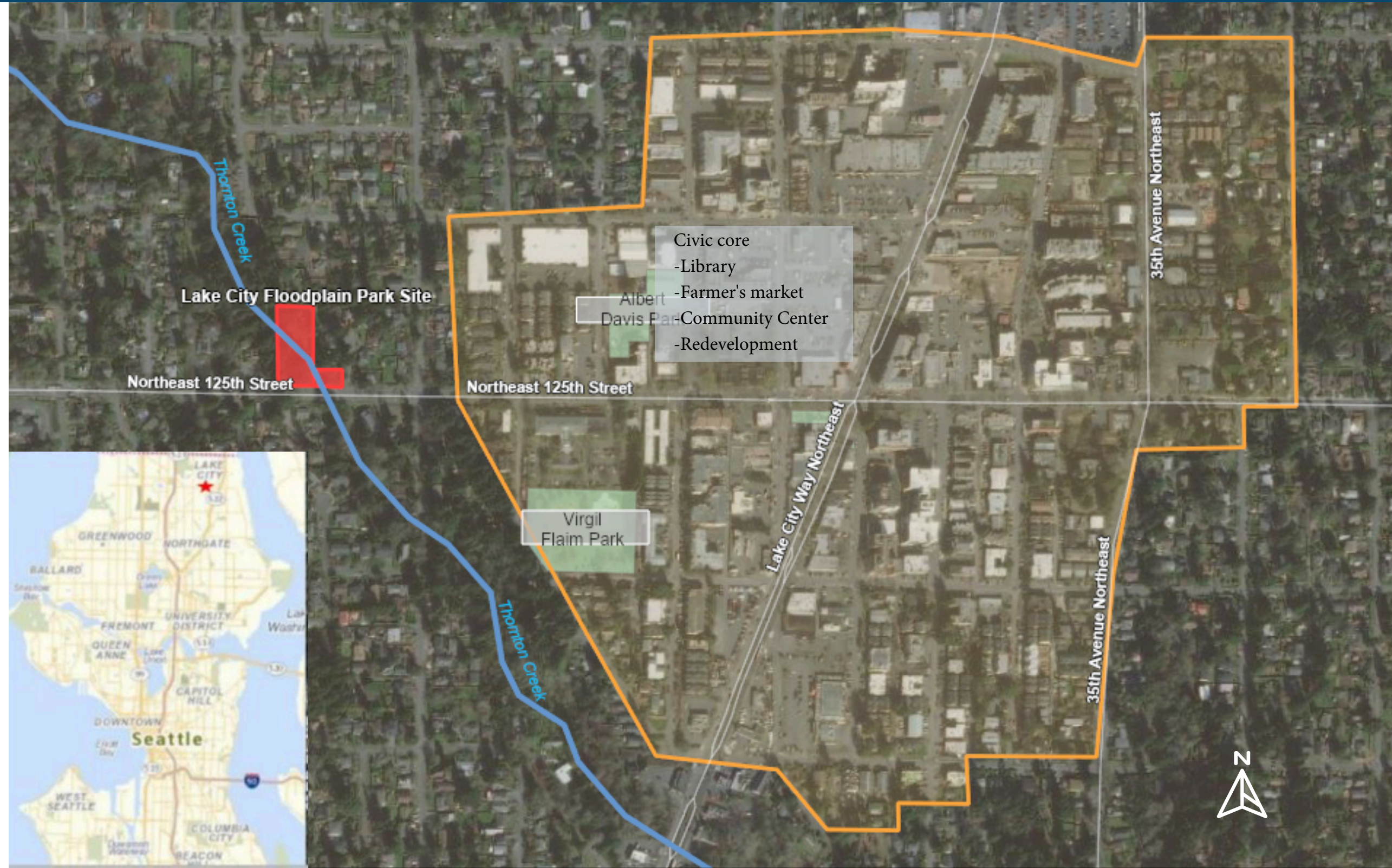
Project site address
2318 NE 125th Street
Seattle, WA 98125



NE 125th Street near 24th Ave NE

West of the Lake City branch of
the Seattle Public Library

North Branch of Thornton Creek

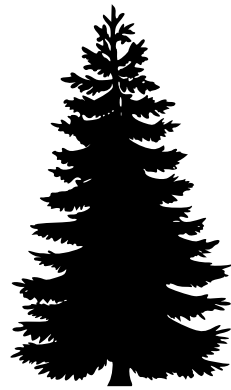
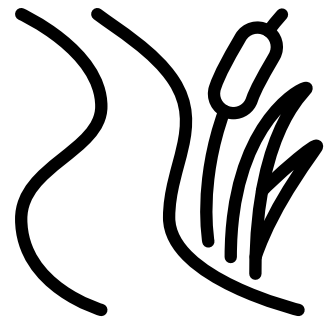
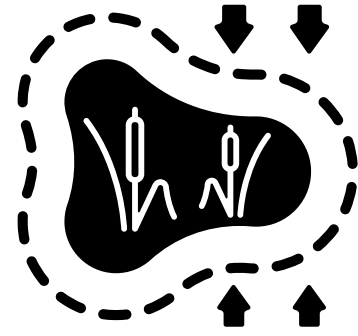
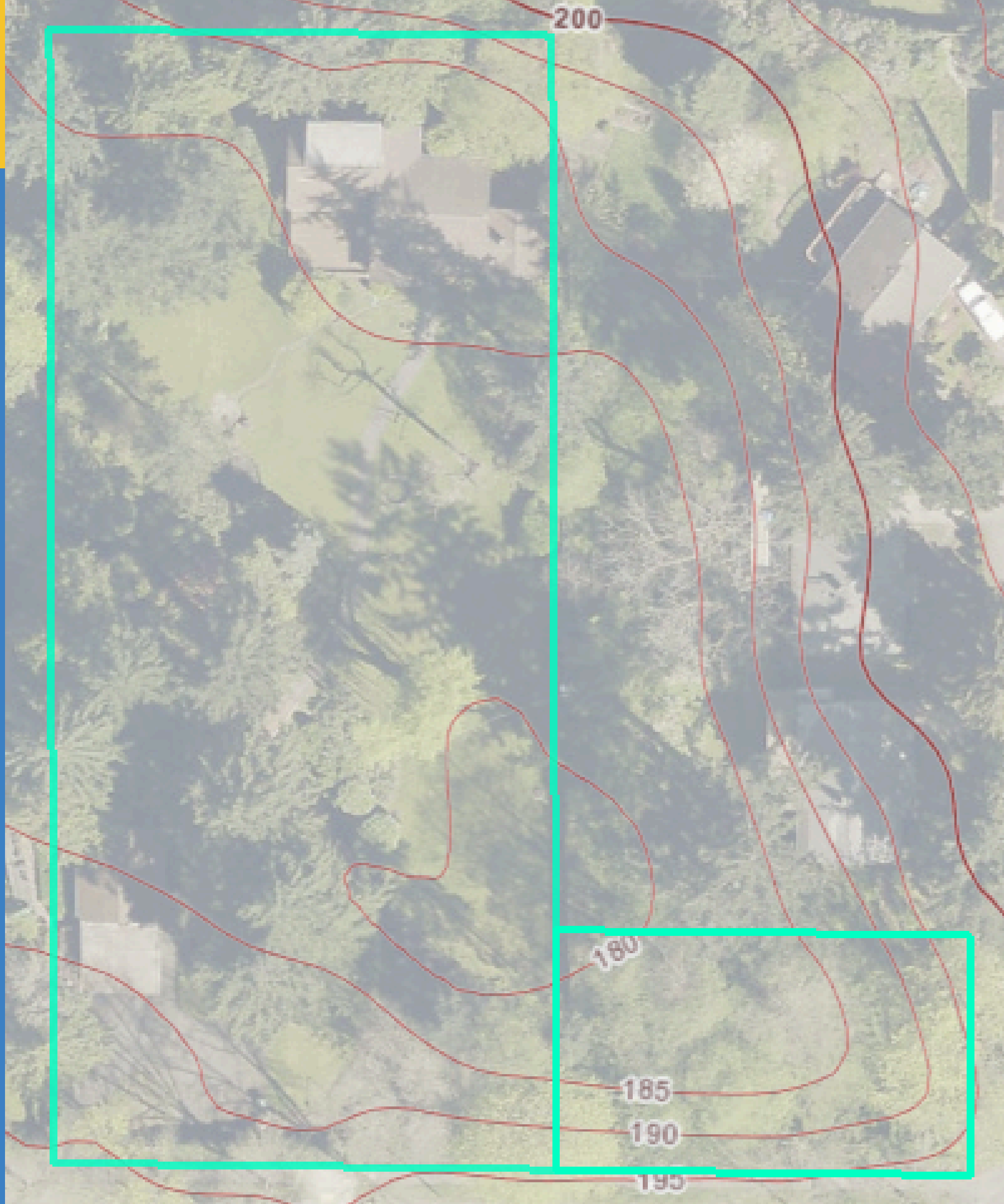


Site Context

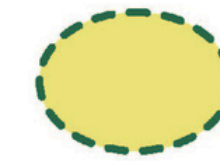
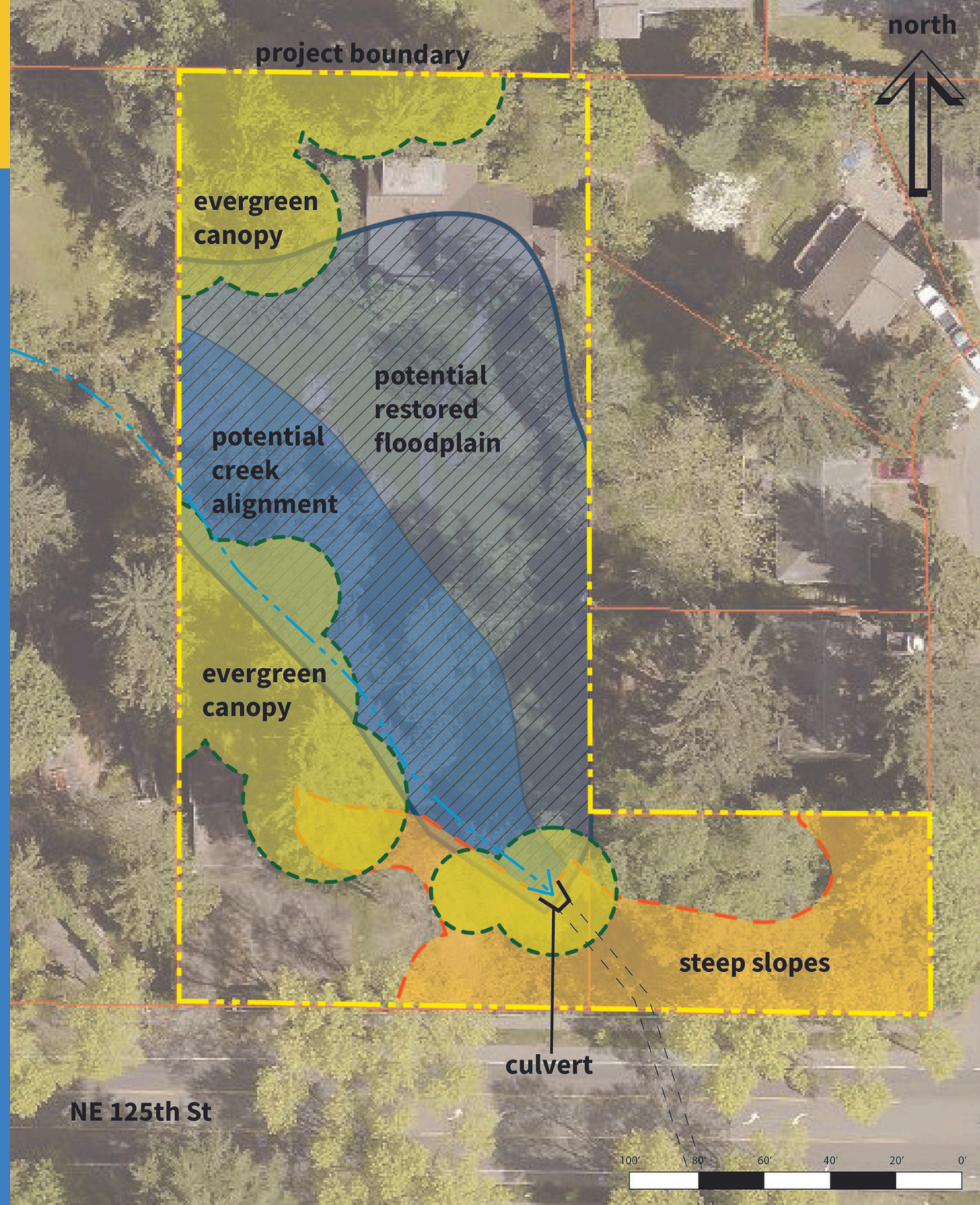


- Site is bordered by private property on the north and west sides and most of the east side.
- There is no through street bordering the north end of the site.
- Current access to the property is from NE 125th St.
- 24th Ave NE is a short cul du sac street.
- The SE corner hosts some of the steepest slopes on the site.

Site Topography



Site Characteristics



Evergreen Canopy

Large and mature existing trees provide evergreen canopy and shade all year round. Extensive digging within the canopy can damage sensitive tree roots.



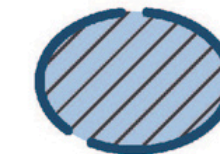
Steep Slopes

The ground is steeply sloped making it difficult to access or traverse the area. Steep slopes are at higher risk of erosion.



Potential Creek Alignment

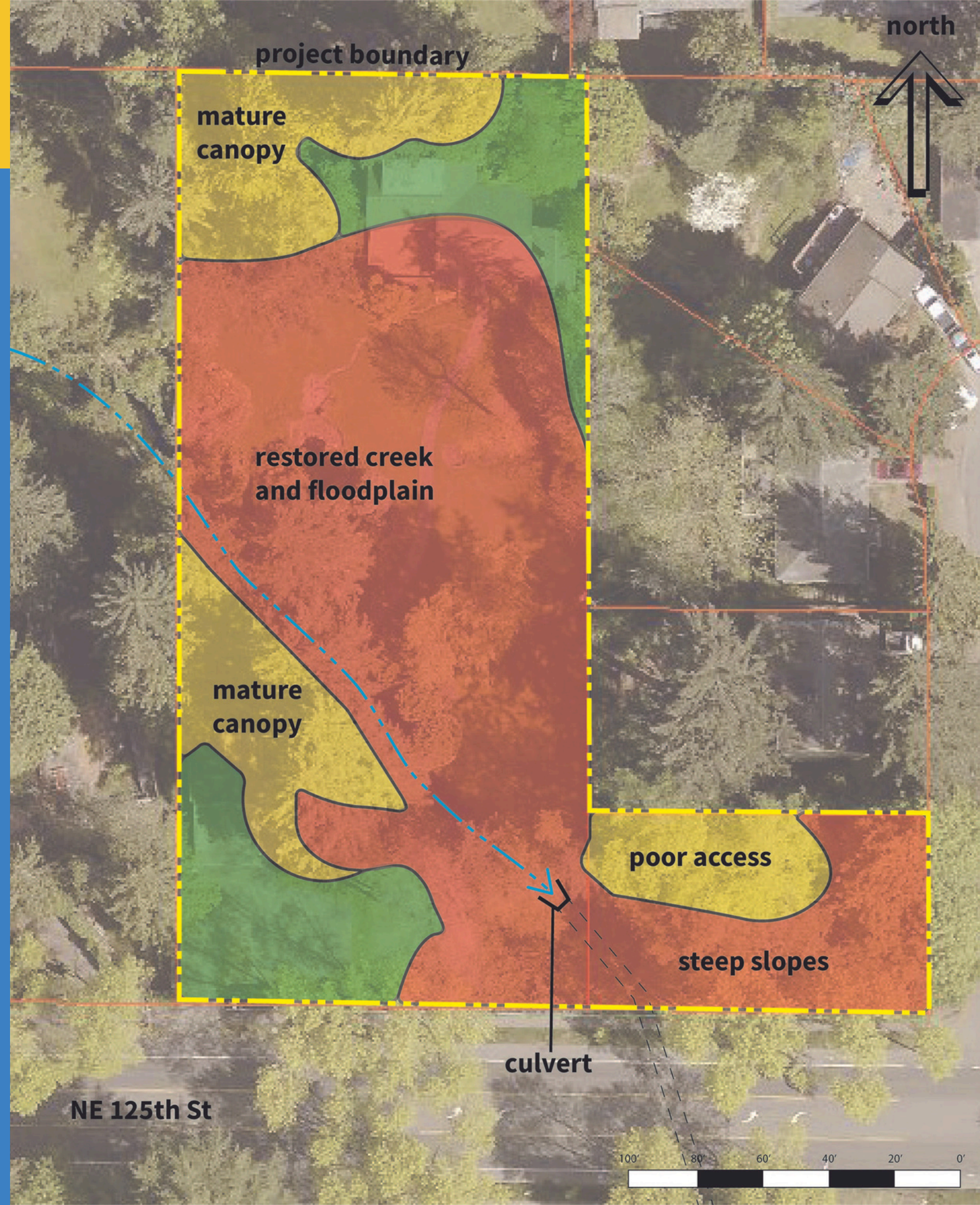
Based on engineering studies, the creek and its banks may be realigned within this area. Once restored, this area will be regularly flooded. The actual creek alignment will be set later on in the project.



Potential Restored Floodplain

The floodplain may be restored within this area. If restored to floodplain, the area will have wet soil and experience seasonal flooding. The actual floodplain extent will be set later on in the project.

Site Feasibility

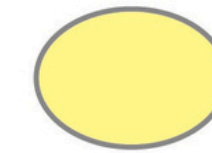


Feasibility for Placement of Park Ideas



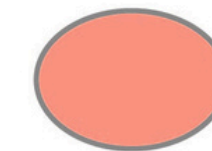
High Feasibility

Open or disturbed spaces that are outside of regulated critical areas and their buffers, especially areas that are easy to access and have low likelihood of flooding.



Moderate Feasibility

Areas that may have regulatory limitations, are not easily accessible, or contain sensitive features, like trees, that must be considered.



Low Feasibility

Areas with substantial regulatory restriction, are inaccessible, experience regular or frequent flooding, or contain critical infrastructure that will not be modified as part of this project, such as the culvert.

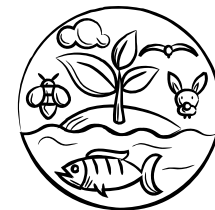
Project Goals



Create a space that connects a diverse Lake City community to an improved, accessible natural area.

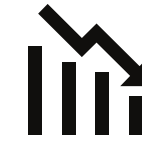


Restore Thornton Creek on the property to a more natural state to reduce large-scale flooding.



Create and restore healthy habitat for salmon and wildlife.

Scope: Creek Floodplain



Reduce peak flows and channel incision



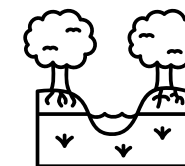
Sediment diversity and transport



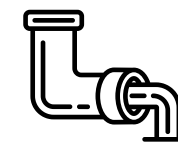
Instream hydraulic complexity



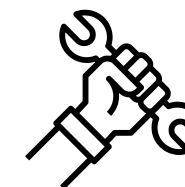
Adequate base flows



Riparian area improvements



Works with underground infrastructure



Long-term O&M

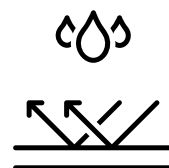
Scope: Park Amenities



Create a sustainable, passive park where residents can immerse themselves in nature without leaving the city



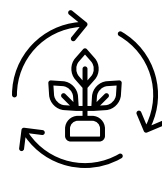
Celebrate the diverse Lake City Community in the design



Limit impervious surfaces



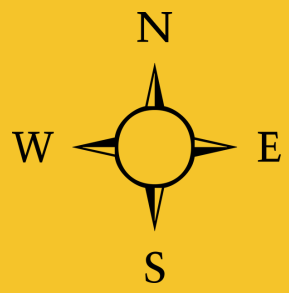
Promote safety through environmental design and enhancing visibility from roads and nearby properties



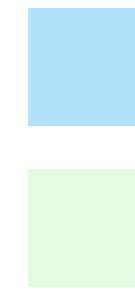
Integrate Green Stormwater Infrastructure



Provide opportunities for environmental education



Creek Alignment Options



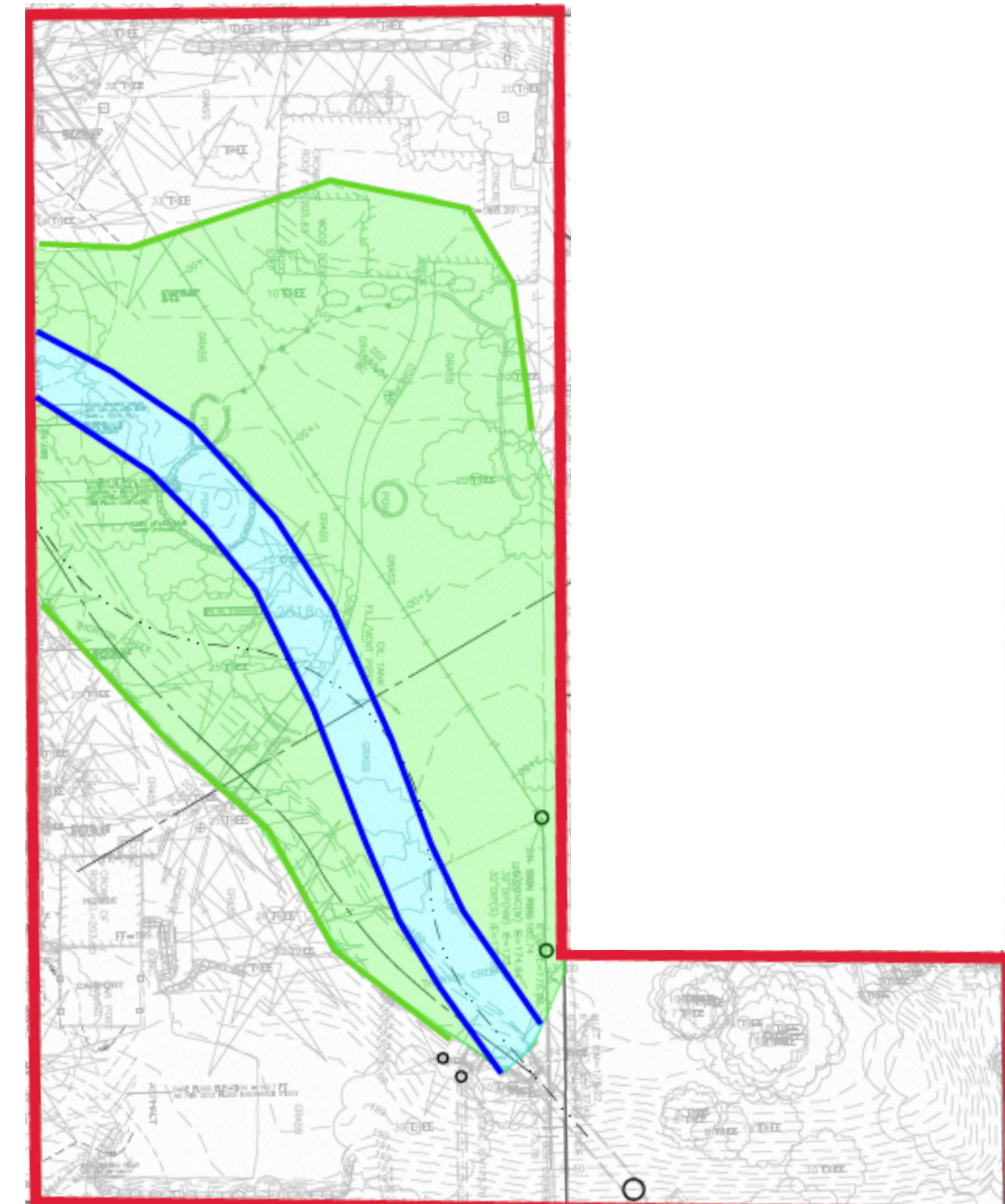
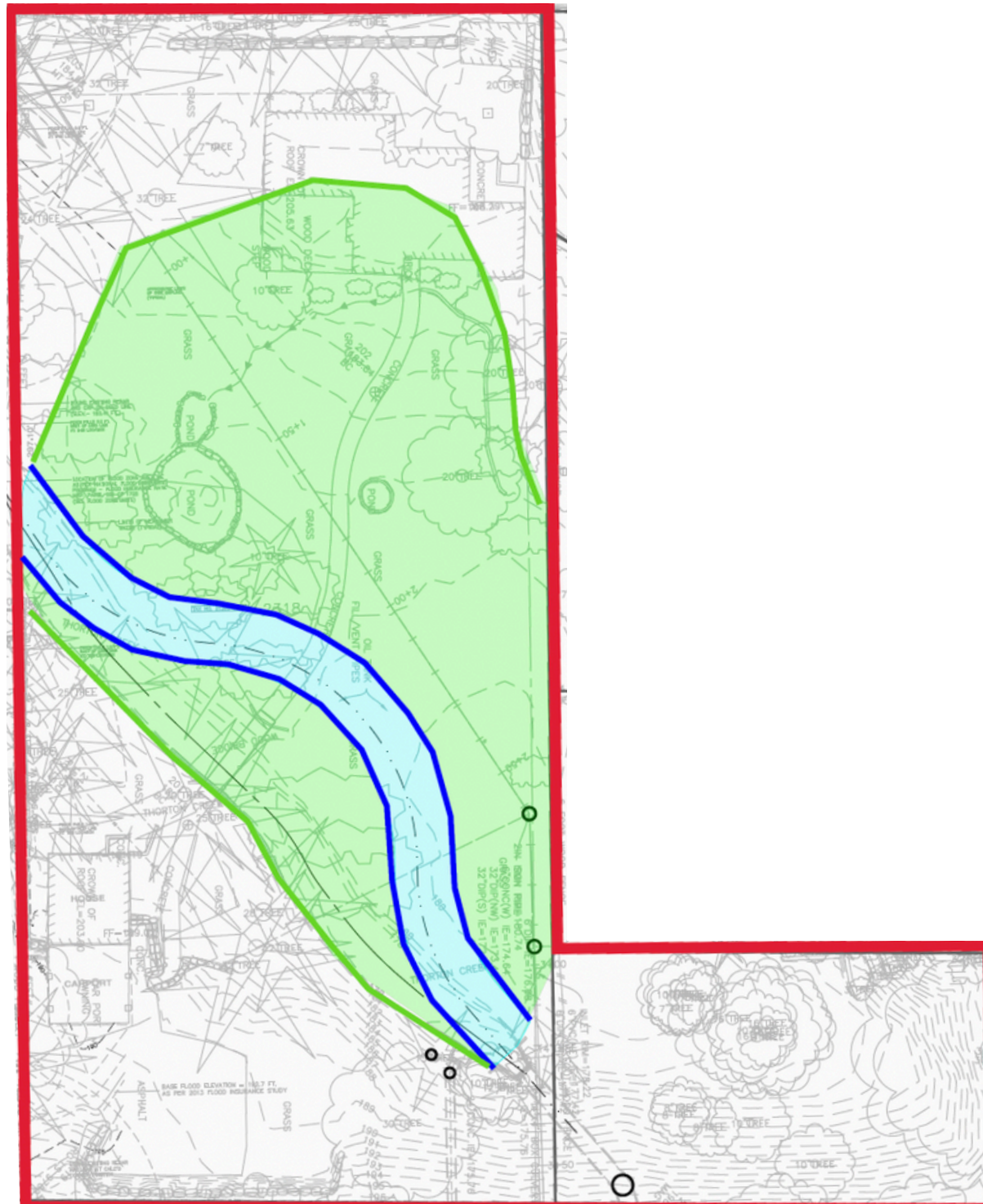
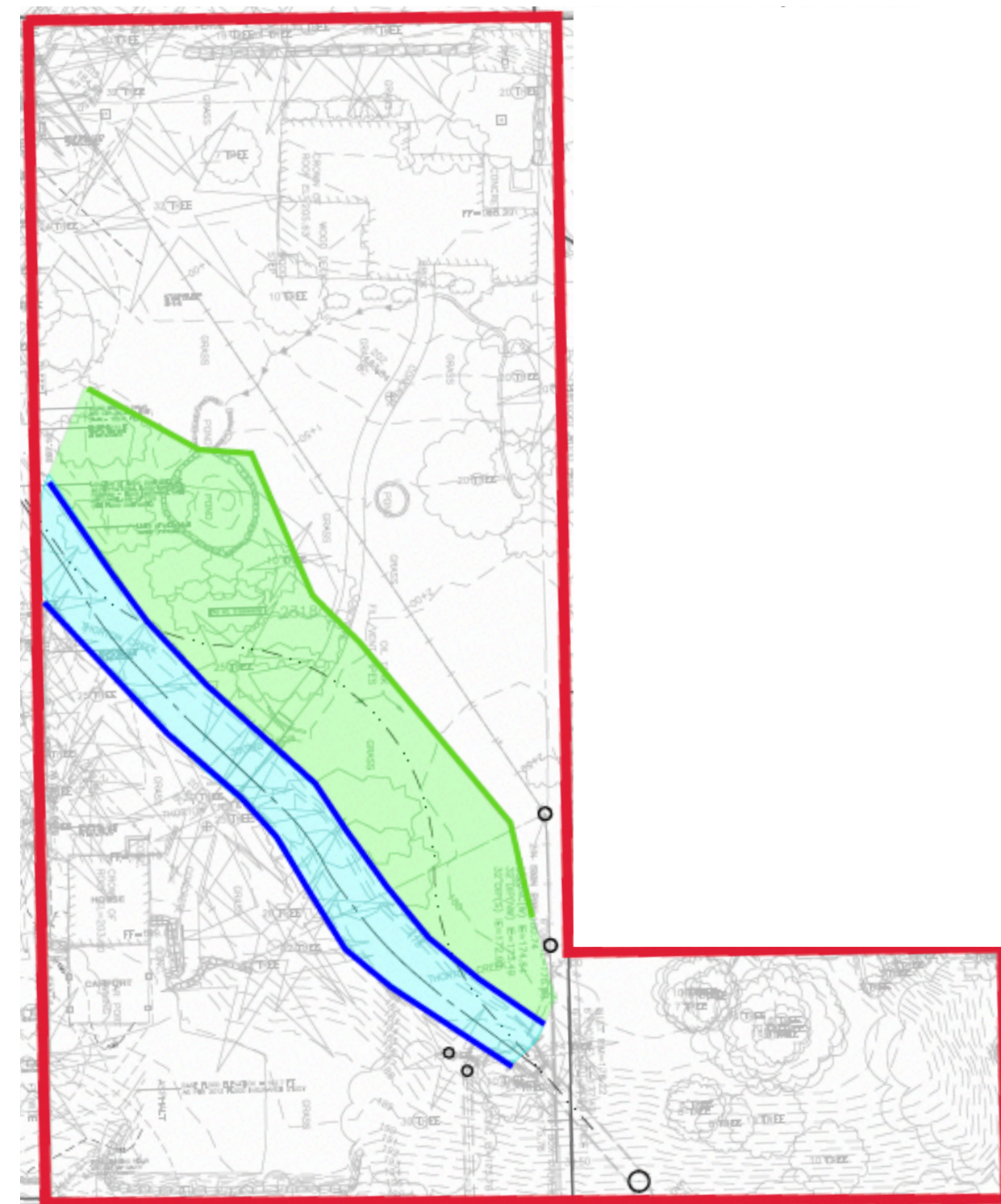
Thornton Creek

Floodplain

Option 1: Basic alignment

Option 2: Meander/park site only

Option 3: Meander/easement





Creek Alignment Selected



Thornton Creek

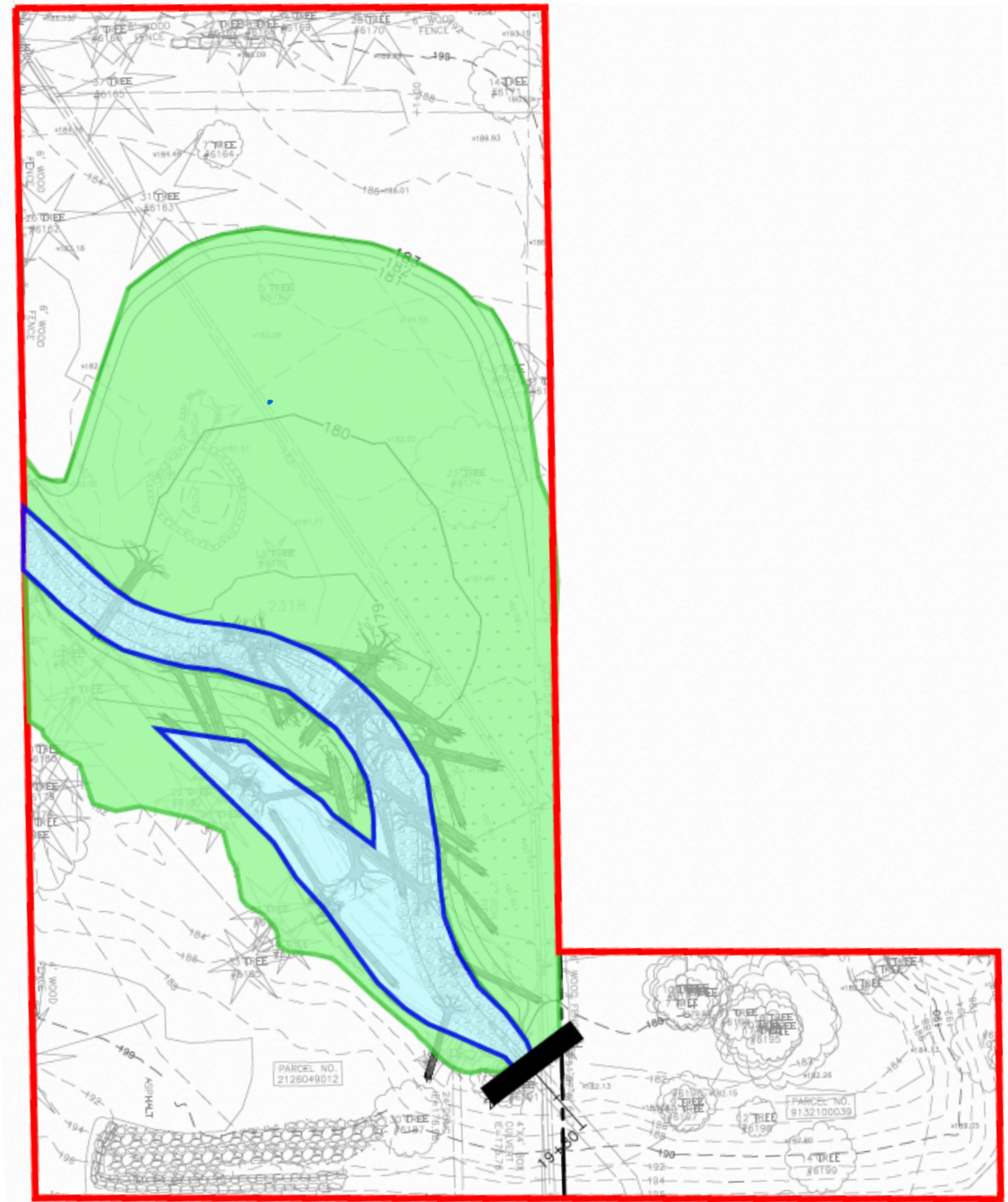


Floodplain



Culvert

Option: Meander



Adds creek length + back channel



Maximizes large woody material in channel



Retains as many native trees as possible



Increases flood storage onsite



Maximizes hyporheic exchange

A Creek and Community Centered Approach

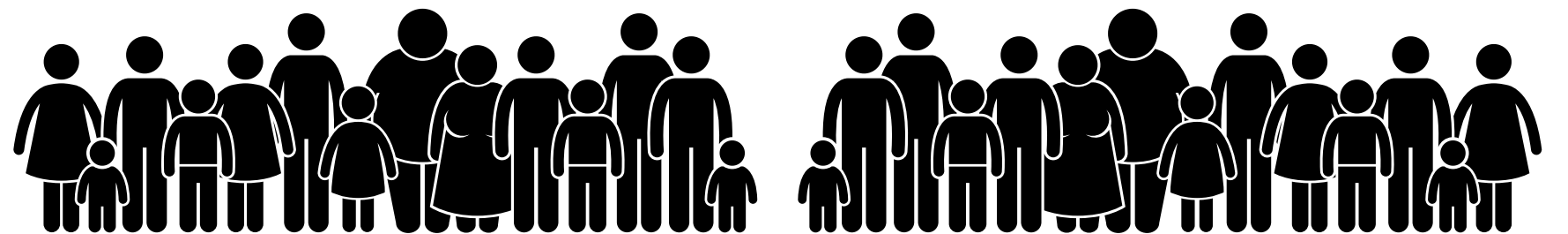


The community is an important stakeholder to whom we are accountable.

We communicate clearly, with integrity and transparency, for connected relationships.

We go into the community to reach people where they are.

We do regular equity check-ins and hold equity-focused meetings to ensure that we continually adapt to community needs.





potential activity history street animals **thornton** viewing banks bike sense calming
camping canopy **natural** cars trash children light concerns possible connected
creek culvert **design** discussion wetland dog **walk** ecology educaton
encampments environement **traffic** experience explore fish flood **floodplain**
flow work green **habitat** health **water** **restoration** playground improve increase
information **city** interest worried land **passerby** level local **trees** management
neighbors boardwalk meadowbrook map **native** runs secure **neighborhood**
nice birds **access** help **opportunity** beautiful outdoor **paths** picnic
plants play environmental pond open gathering preserved quality public
road homeless learn salmon schools **safety** maintenance share signage **sit** speed
stream **community** benches free kids **structure** drug tents **trails**
vegetation observe **wildlife** visitors lake volunteer house watershed

Community Feedback

from Workshop #1



Nature Appreciation
and Viewing



Walking



Seating



Interpretive (signs/exhibits)



Nature Exploration



Restoration / Conservation



Native plants



Quiet



Wildflowers



Wildlife Watching



Scenic Overlook



Walking Trails



Boardwalks



Art



Bike Rack

from Workshop #1

Community Feedback Park Ideas



Discuss ideas



Place tiles and comments

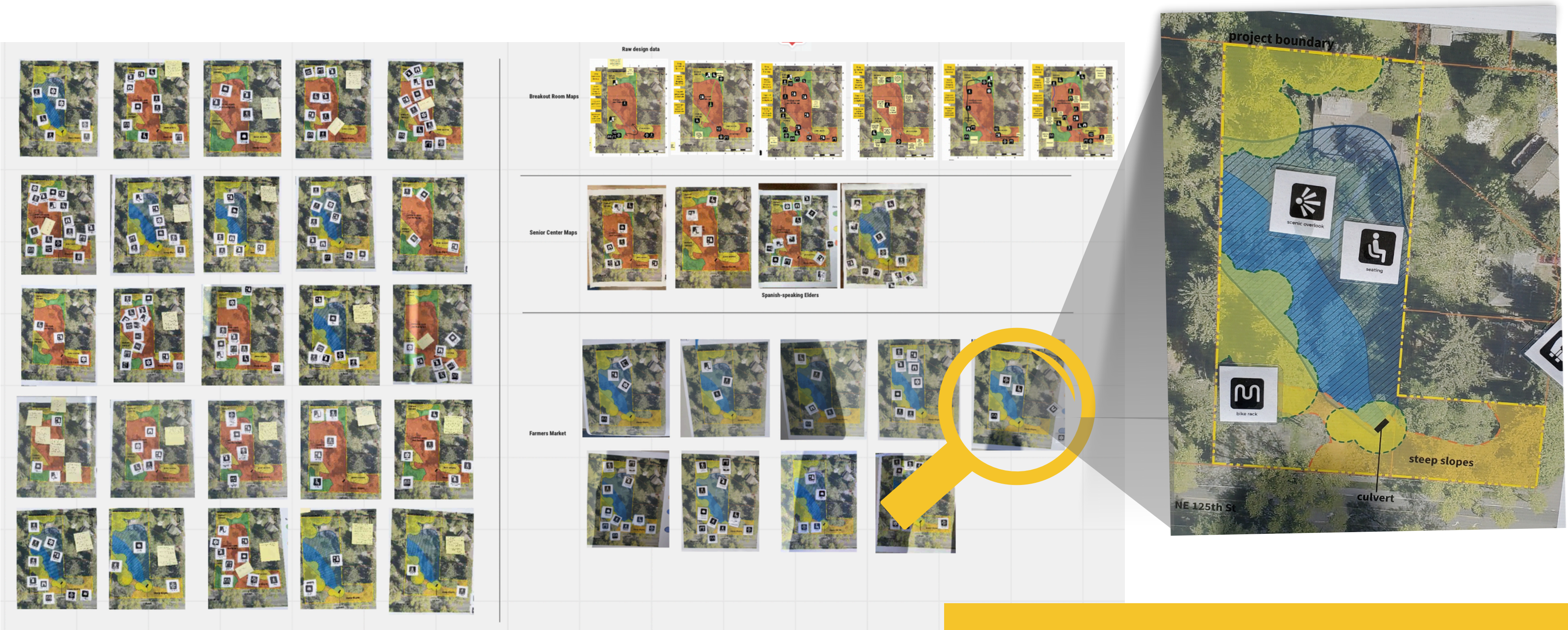


Discuss design and refine ideas

Build Your Park exercise with community members
Lake City Farmers Market, Thursday, June 16, 2022

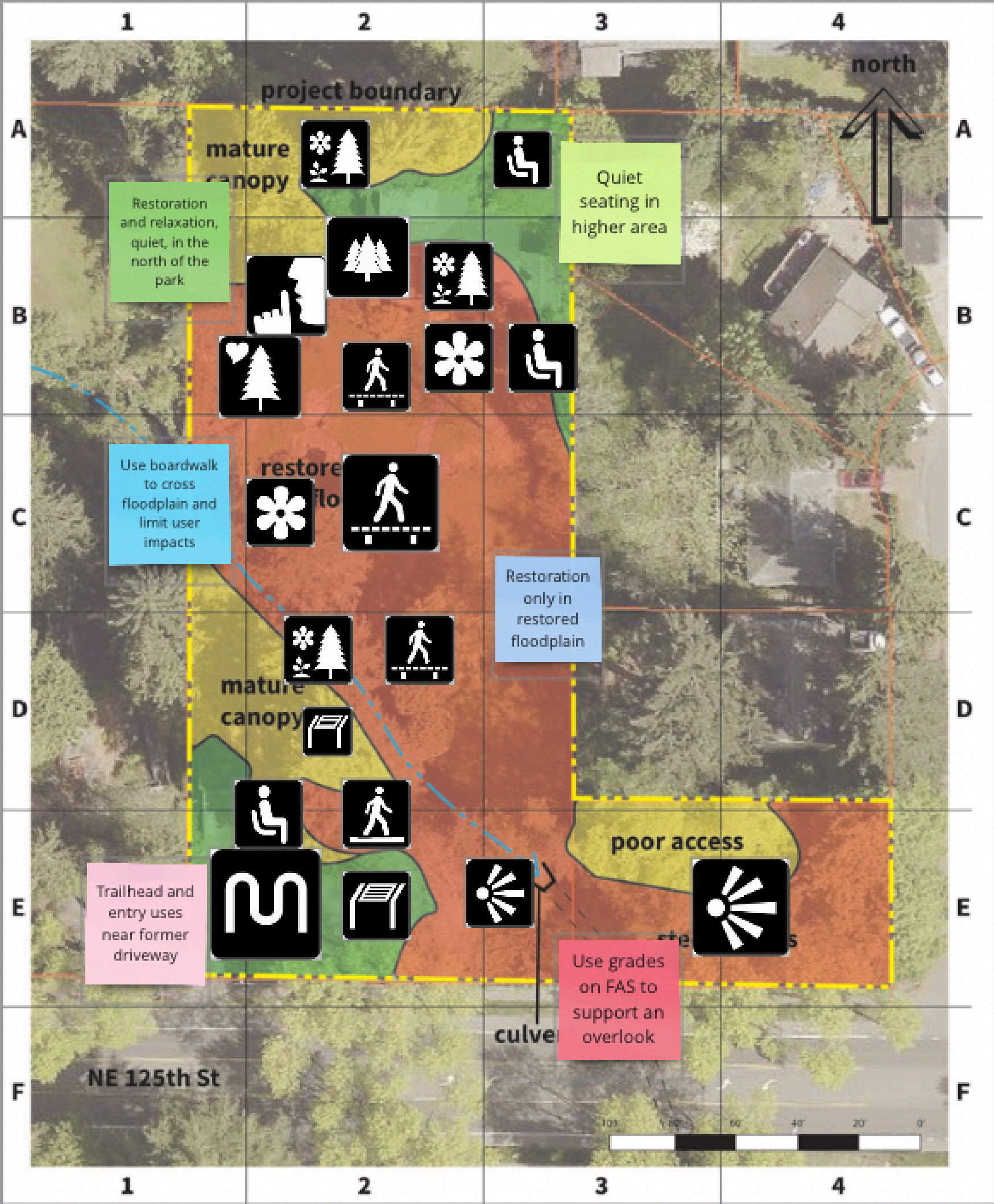
Round #2

Build Your Park



from Round #2

Community Park Designs

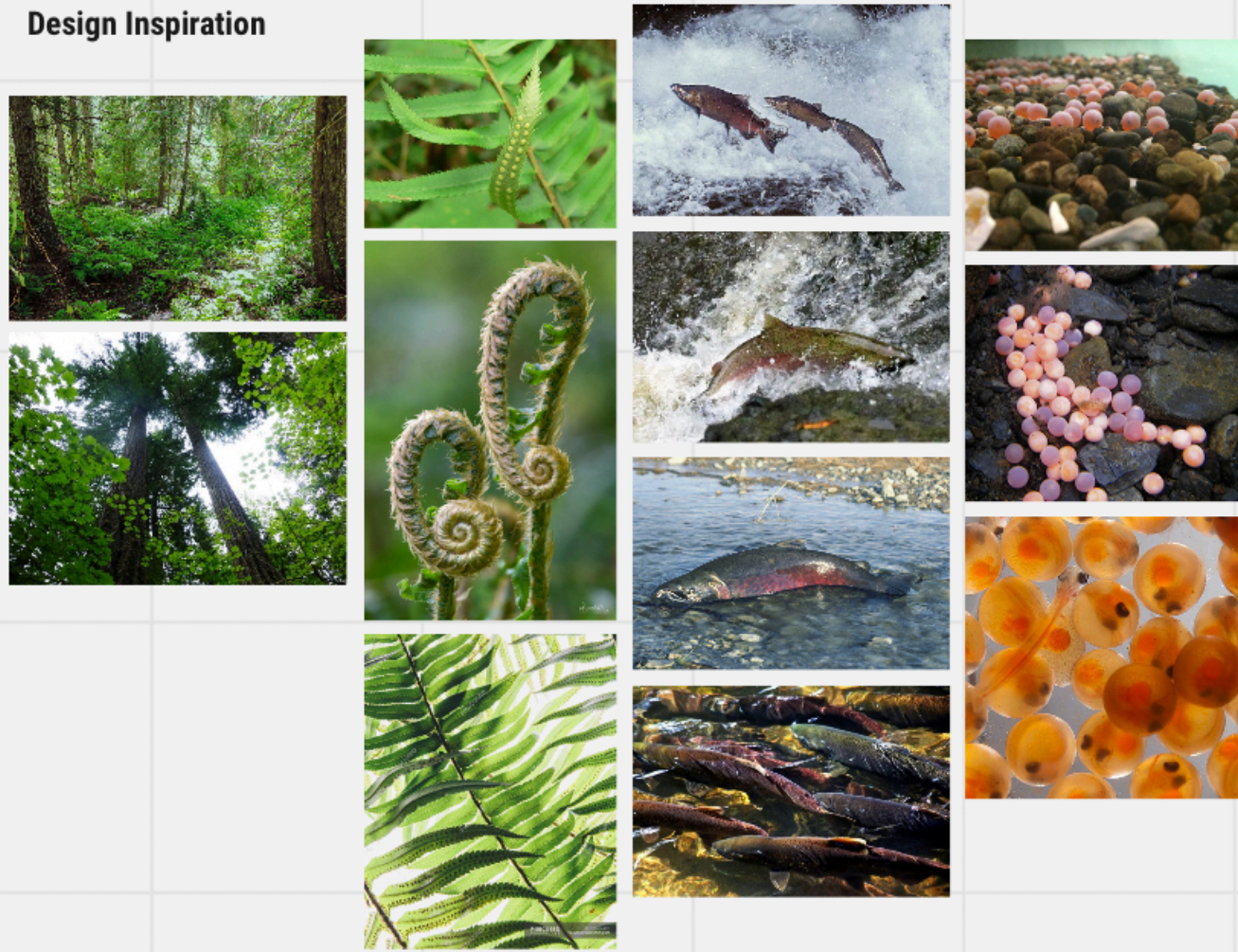


| Consensus Point | | Design Options | |
|---|--|---------------------------|---|
| Restoration only in creek buffer | Use boardwalk to cross floodplain and limit user impacts | Public art installation | Bridge |
| Restoration and relaxation, quiet, in the north of the park | Quiet seating in higher area | Future trail connections | Interpretive exhibit format, construction, themes |
| Use grades on FAS to support an overlook | Trailhead and entry uses near former driveway | Year-round use facilities | Seasonal closures of select facilities |

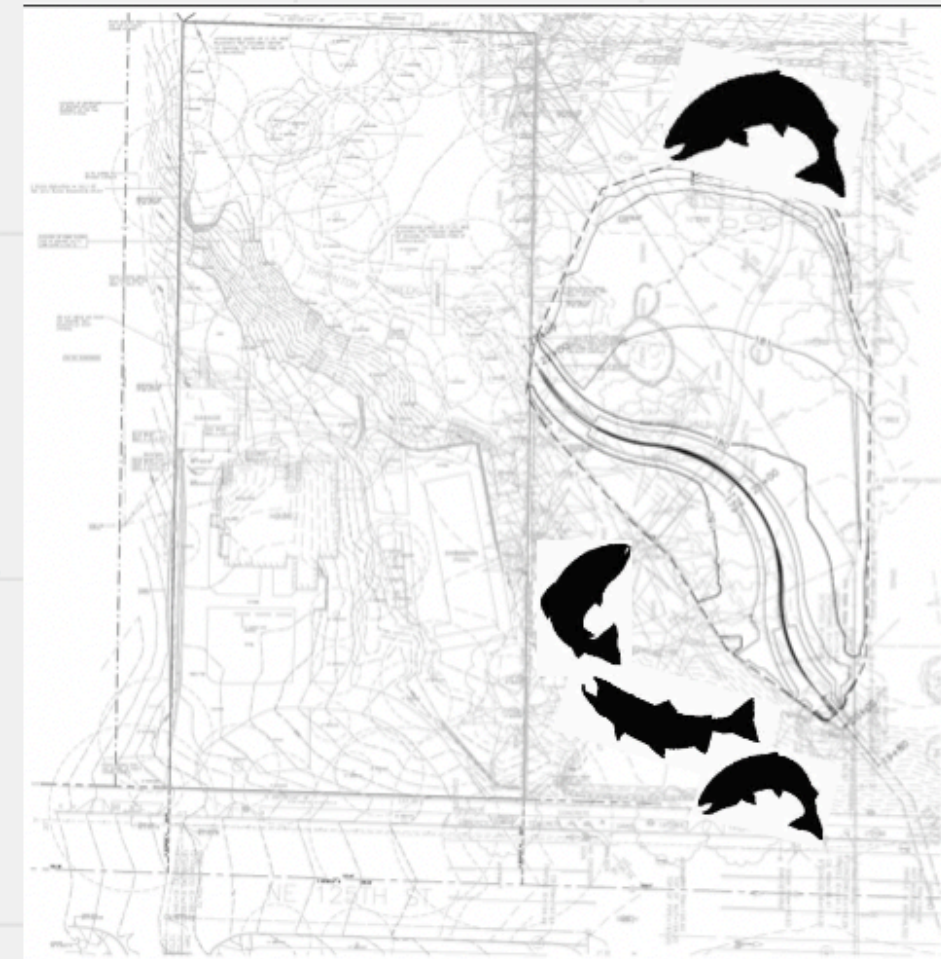
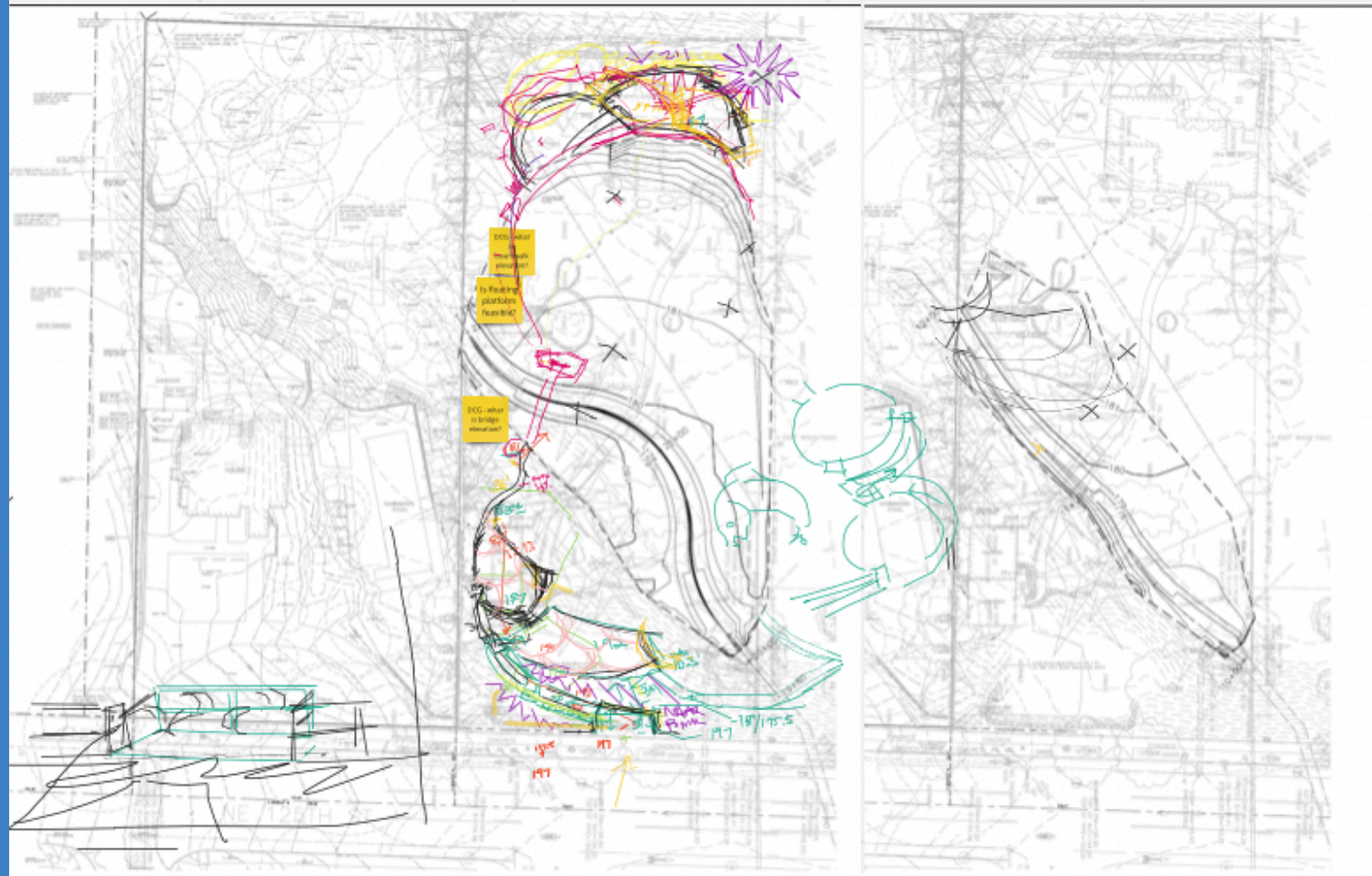
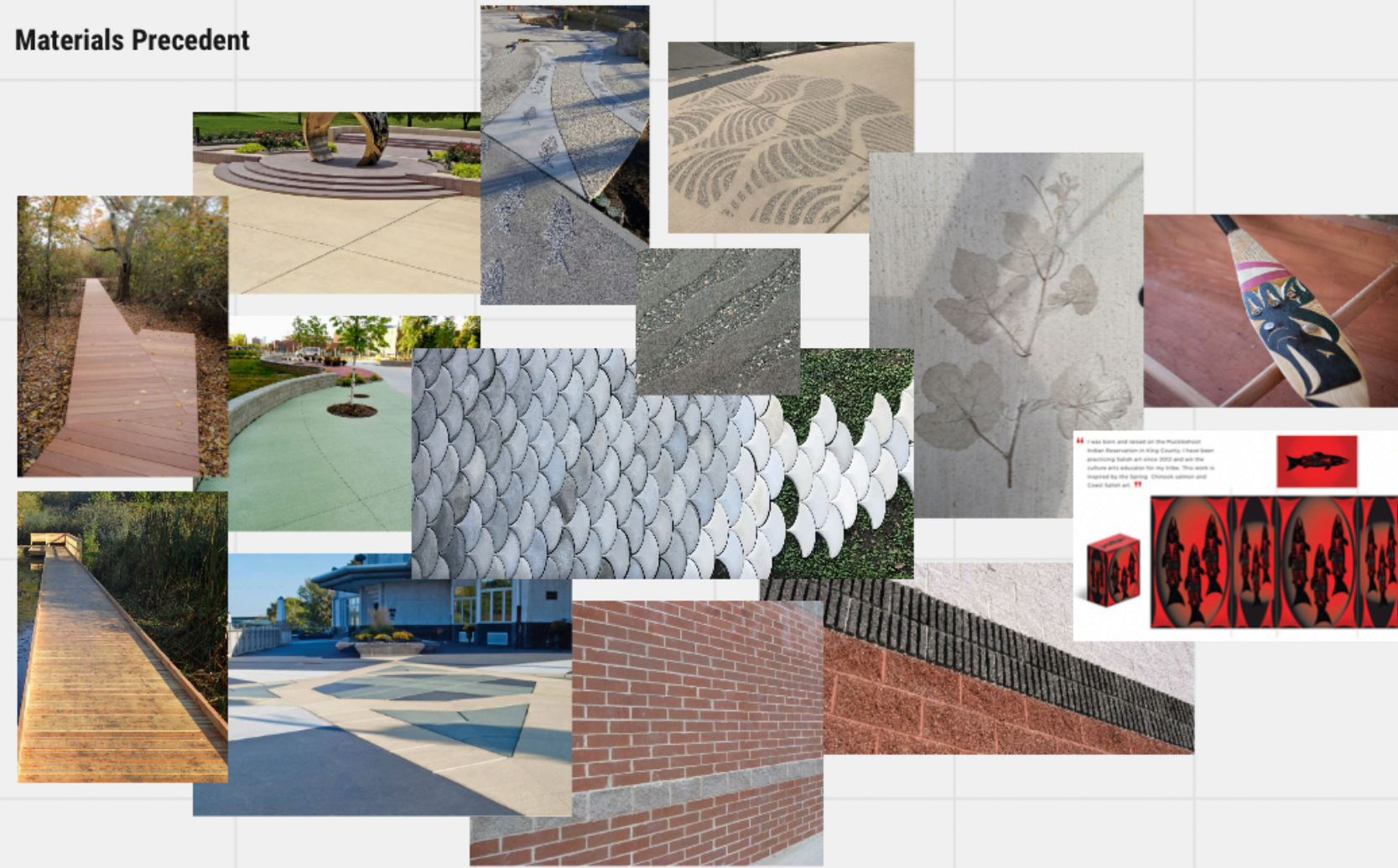
| Consensus Point | | Design Options | |
|---|--|---------------------------|---|
| Restoration only in creek buffer | Use boardwalk to cross floodplain and limit user impacts | Public art installation | Bridge |
| Restoration and relaxation, quiet, in the north of the park | Quiet seating in higher area | Future trail connections | Interpretive exhibit format, construction, themes |
| Use grades on FAS to support an overlook | Trailhead and entry uses near former driveway | Year-round use facilities | Seasonal closures of select facilities |

Inspiration

Design Inspiration



Materials Precedent





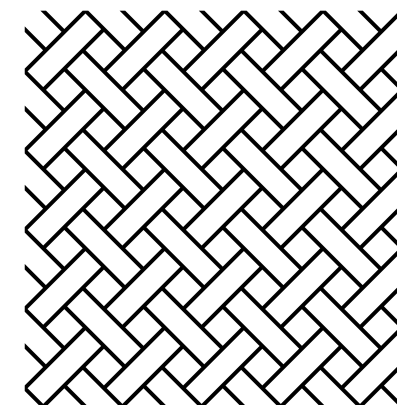
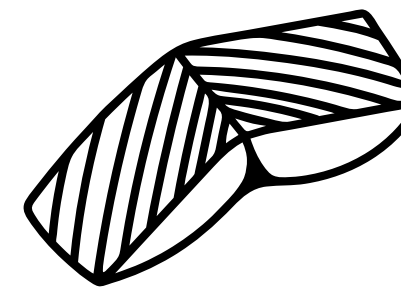
Conceptual Design Options

Inspiration



INSPIRATION

CONCEPT | Herringbone



Herringbone



CONCEPT | Salmon lifecycle

back in service vehicle parking

reinforced concrete

bike rack

replace street trees, typ.

rolled curb

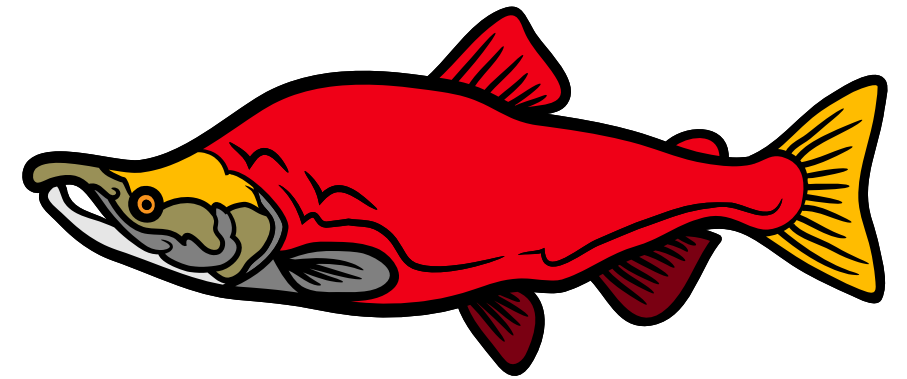
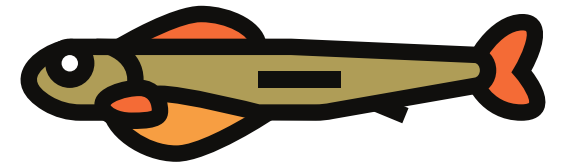
raised striped crossing

proposed sidewalk and street tree replacement to occur with future culvert work

estimated extent of future culvert work

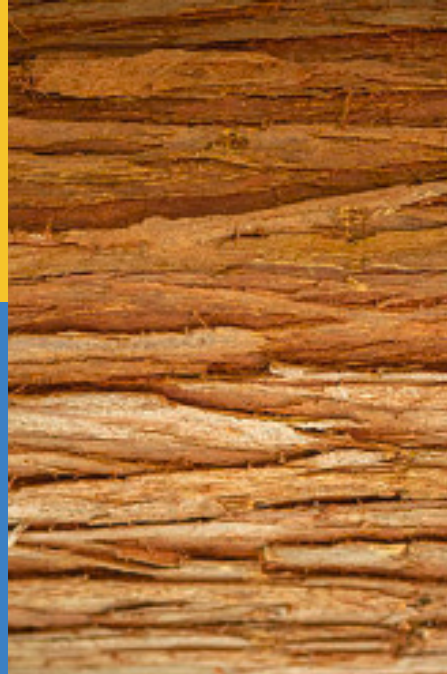
striped crossing

SCALE 1" = 20'



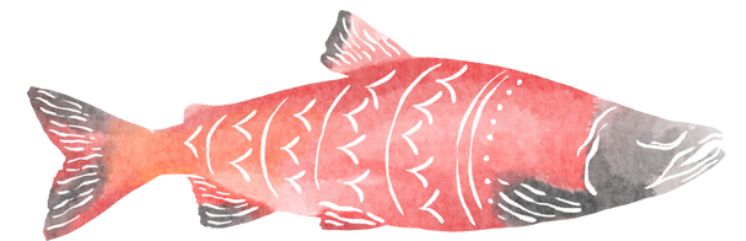
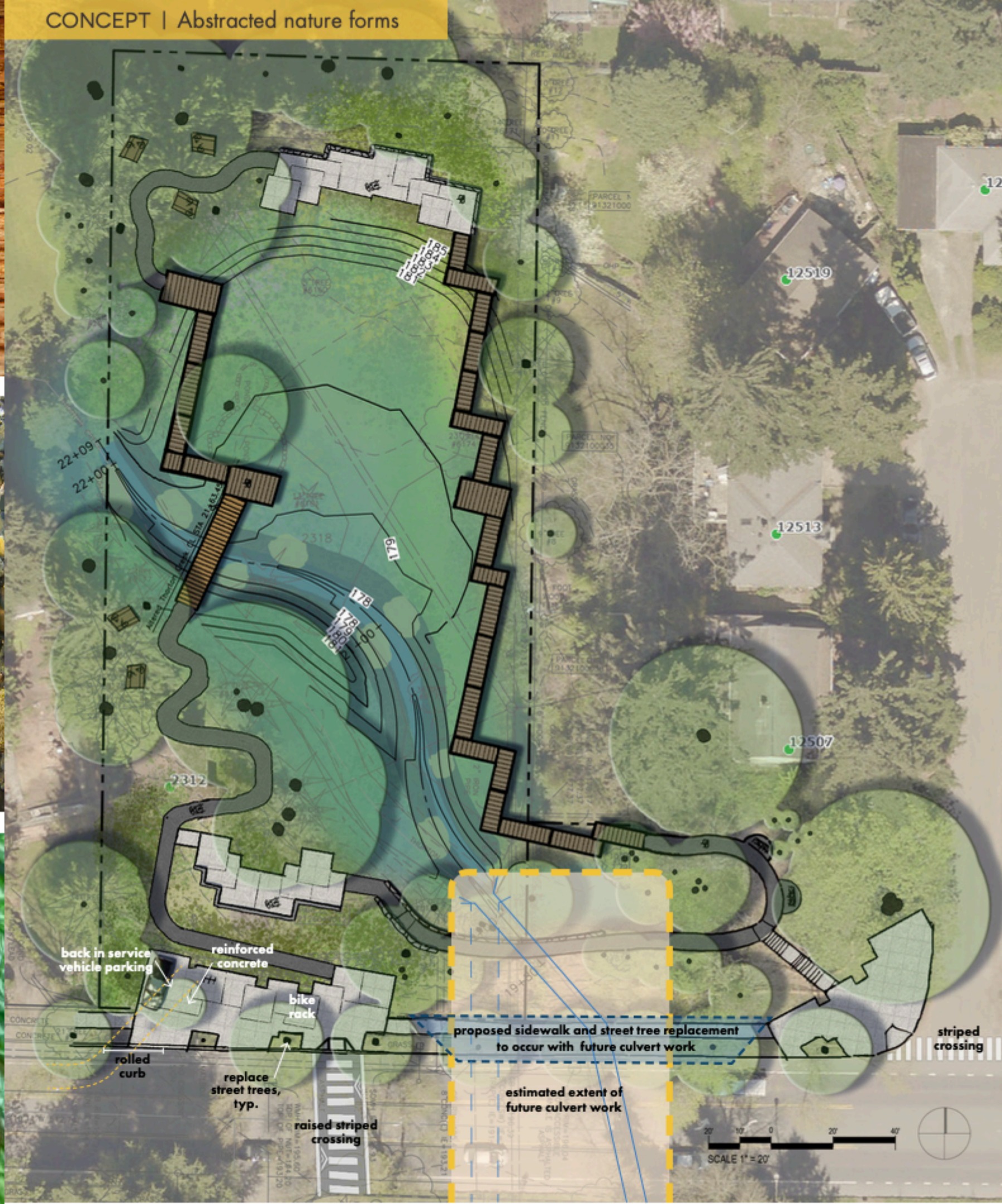
Salmon lifecycle

Inspiration



INSPIRATION

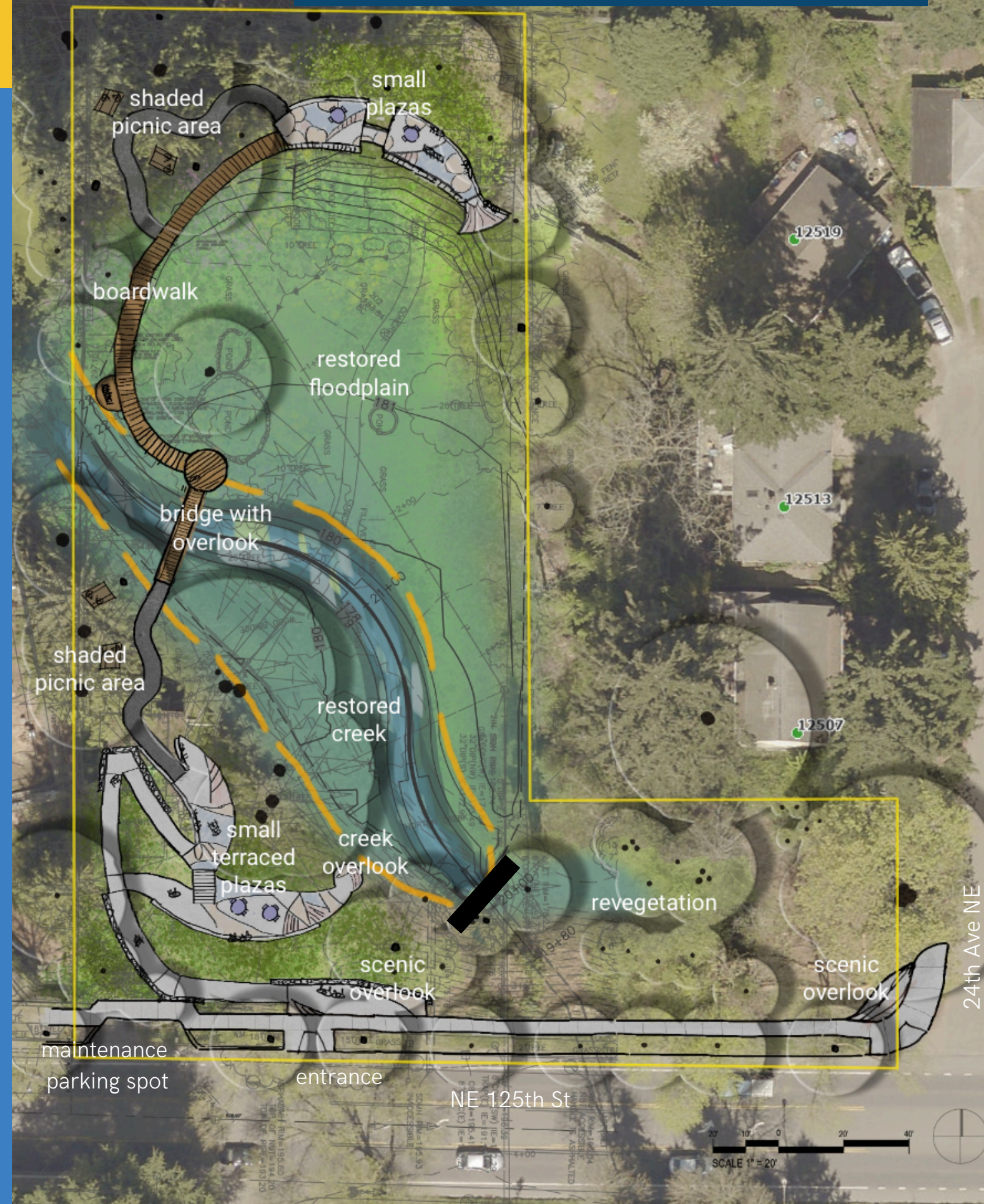
CONCEPT | Abstracted nature forms



Abstracted nature forms

Example Concepts

Solitude | Lower Impact



Gathering | Higher Impact



Consolidated Community Co-created Design
Balanced amenities and impacts



Consensus

| | | |
|-------------------|---------------------------|------------------------------|
| Loop trail | Seating (benches, tables) | Accessible trails |
| Bridge | Gathering | Walking trails (inc. bridge) |
| Creek Restoration | Revegetation | Overlooks |

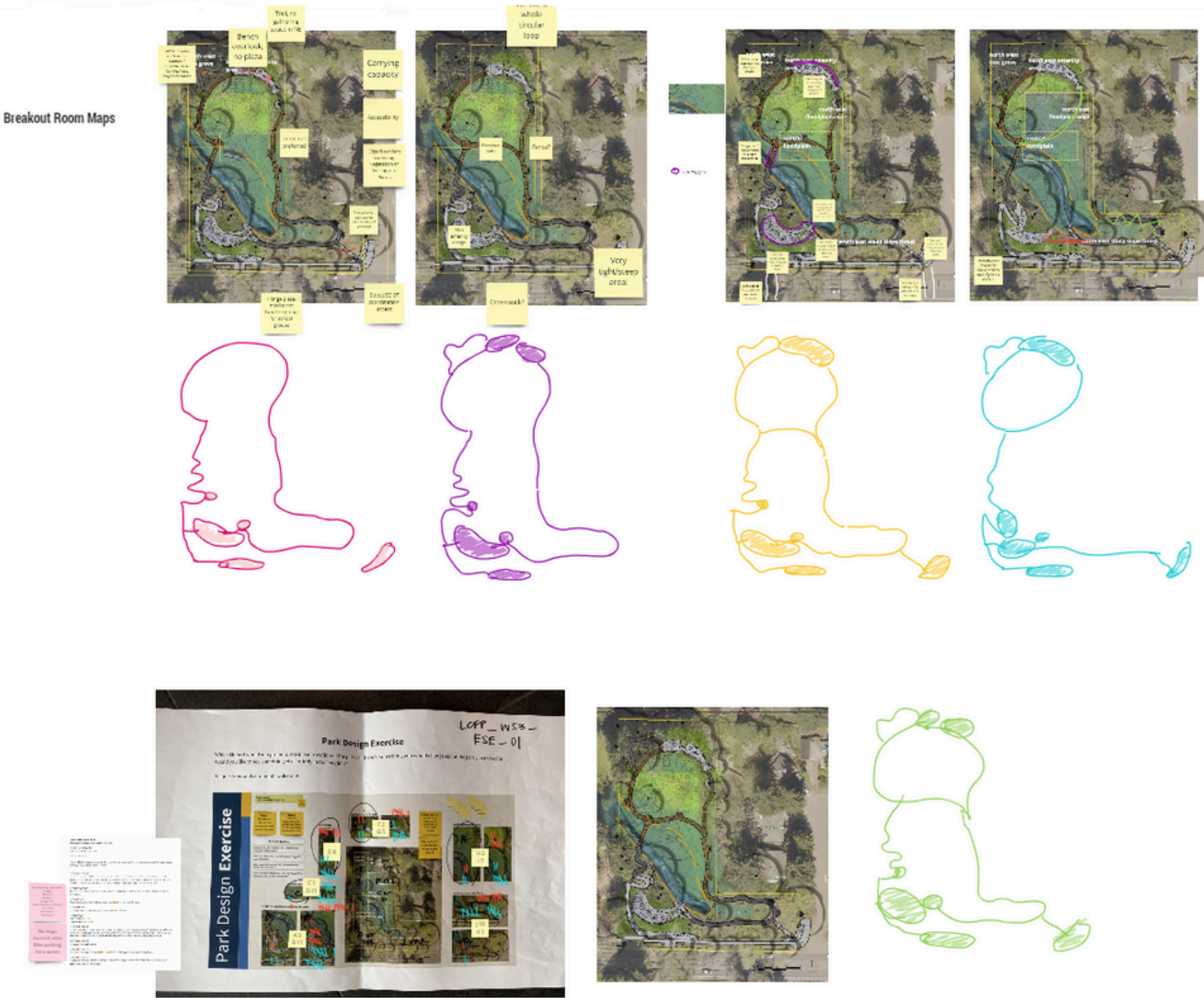
Divided

| | | |
|--------------------------|-----------------------|------------------|
| Central trail connection | Southeast stair climb | Size of NE plaza |
|--------------------------|-----------------------|------------------|

Other feedback, concerns, ideas:

- Art integration
- Crosswalks
- Fencing
- Bathroom
- Camping concerns

- Highlights of the consolidated design:
- Amenities and impacts are balanced between two earlier options.
 - Placement of new amenities is focused on areas of prior disturbance.
 - Amenities accommodate both small and large group experiences.



from Workshop #3

Community Feedback

Conceptual Design

CONCEPT & KEY TO VIGNETTES



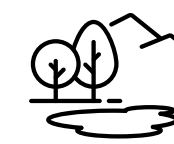
Project features



Two gathering spaces



Walking paths



Provides opportunities for nature immersion



Maximizes creek restoration



Minimizes impact to existing wetland



Retains as many native trees as possible

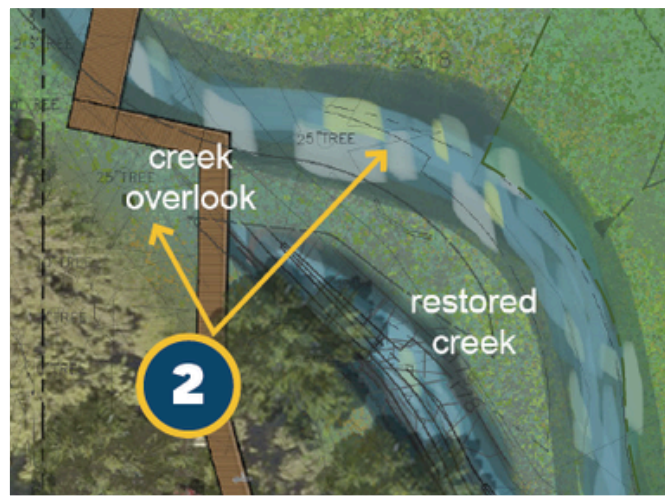


The project team is considering a trail connection here (exact path and trail type to be determined) IF it would not overly impact environmentally sensitive areas

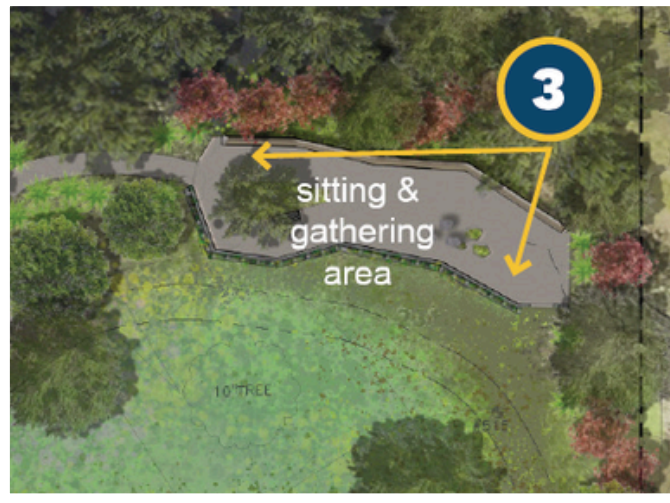
Design Vignette



Design Vignette



Design Vignette



Habitat Elements

streambed gravel | boulders | wood | creek channel



native plants | wetland | floodplain | slope forest

Seattle Design Commission Comments

1. ACCESS

- Commissioners would like more information on pedestrian and vehicular access to the site, to better understand how people will arrive to the site.
--Primary access to the park will be by foot. Neighborhood residents may walk or roll to the park. Others may arrive by bus. There is a bus stop ½ block from the park entrance.
- More information should be provided on how onsite access will occur for site operations and maintenance crews, including the role of the ROW versus onsite access in achieving this work.
--Maintenance access is being worked out right now. It may not be safe to provide maintenance access from the ROW. It may be provided on 24th Ave NE or through an agreement with a neighboring property owner.
- Commissioners support a 2nd access point to the site, with the understanding that topography provides challenges to accomplish that goal
--Tried hard to make SE access work, but there were conflicts with ECA and infrastructure. Couldn't make it work. Agree with SDC, it would be ideal.
- A slide should be provided to illustrate how visual and physical access will occur from the abutting public realm, including any vegetation or tree management to accomplish this. This should include information on existing trees and topography (existing conditions) with design options FROM THE STREET.
--See next slide.
- SDOT should be included and engaged in all ROW solutions for access and circulation, including crosswalks and other ROW improvements.
--Agreed. SDOT has been engaged.
- Explore partnerships on abutting properties for trail easements, including properties from the north.
--Abutting property owners are not interested in allowing public access on their properties.

Will add planting plan information here

2. SAFETY

- More information should be provided on how safety will be enhanced through the size and scale of circulation and site lighting.
 - Safety will be enhanced through site lines into the park from the street and abutting properties as well as through site activation. Lighting is not included in this project.
- Dead ends should be reconsidered as they can affect safety within the park area.
 - We have provided a loop.
- Where long stretches of walkway occur, there should be improvements that allow people to pass each other with ease.
 - All path widths accommodate easy passing.
- Make sure widths of paths will support all types of users (passing strollers etc.).
 - Agreed. Done.

3. PHASING

- Phasing of site improvements and culvert installation are the key to a successful outcome. Without this integration and coordination, the Commission is concerned about how the project can proceed. If coordination on project delivery isn't possible, a plan should be developed to show the reality of installing the culvert after implementation of the park portion of the project.
- Drawing that shows your thinking around phasing in light of culvert
 - No major planting on FAS parcel is planned.
 - We agree that it would be good to have a design for the culvert replacement, but the City will not have the money for that project for 20+ years.
 - Conceptually, this team is thinking about it and avoiding major park infrastructure in areas of likely future disturbance due to culvert replacement.
 - Creek modeling is taking consideration that the culvert will be upsized.

4. DESIGN

- Commissioners commented that the 3 design options shown may be only one option and that it would be nice to see the team explore other design language and/ or concepts that might help them solve some of the problems that currently exist with access and safety.

--Done as shown on a previous slide.

--Site is constrained by ECAs at surface and underground infrastructure. In addition, we have to be responsive to community process.

- Update each design option to show vehicular access – on and offsite – integrated into project design.

--There is no vehicular access to the site for park visitors. The park is small (just about one acre) and entirely within ECAs. There is no space to provide a parking lot.

--SDOT's project on 125th includes a buffered bike lane; there is no space for on-street parking.

5. COMMUNITY ENGAGEMENT

- Work with the Office of Arts and Culture on opportunities to integrate Art at the site.

--OAC has limited capacity to work with us. We are continuing the conversation with them at the same time that we are exploring other art options.

- Continue to work and expand on the public engagement strategies to inform project designs.

--We have done this consistently. We are following SPR's engagement process and have completed all major engagement milestones. There is the potential for an event around ground breaking and definitely a ribbon cutting.

- Continue community involvement via on-site walk-throughs with diverse population representing all local communities.

--We couldn't have people on site -- no bridge, ground uneven, no hand rails.

Thank you to our Funders



King County



**KING COUNTY
FLOOD CONTROL
DISTRICT**



**Seattle
Parks & Recreation**



King County

Department of Natural Resources and Parks
Wastewater Treatment Division



**Seattle
Public
Utilities**



DEPARTMENT OF
ECOLOGY
State of Washington



WASHINGTON STATE
Recreation and
Conservation Office

